

B6000 Series Potable Water Baffle

Client: Berrigan Shire Council for client installation
Membrane: Sioen B6000 Potable Water Coated PVC
Units: 4 Identical units provided for client installation



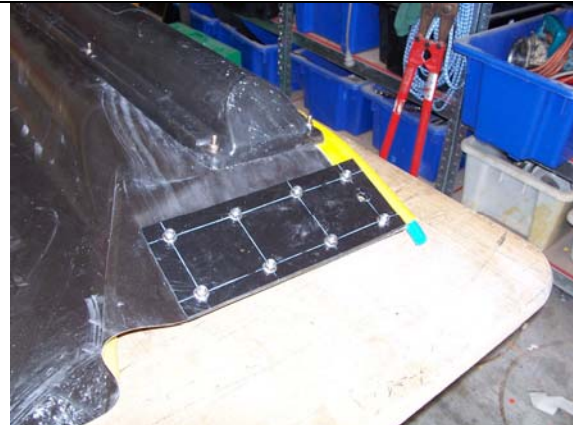
Length of Baffle 7m: Contour 0 to 2m over first 3m & 1 to 2m over end 2m



Floats AB&BCo HDPE rotationally moulded bolt on float bars



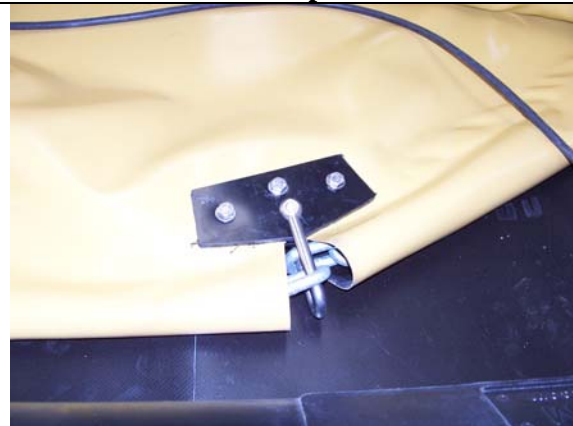
End plates 6mm HDPE sheet bolted to skirt with M8x25mm 316 SS



Hose inserted in pocket on top of boom to take 6mm SS wire top tension member



10mm Ballast chain secured to 6mm HDPE end plates using M10 316 long D shackles



6mm HDPE intermediate plates attached at each toe of baffle